

PUBLISHING TOOLS FOR

QuarkXPress™



FROM A LOWLY
APPRENTICE
PRODUCTION

Inspiration
sold separately

A LOWLY APPRENTICE production

THE QUARKXPRESS FEATURE REVOLUTION BEGINS...

XPert TOOLS

VOLUME 1

XPert Loader™

XPert Loader lets you create sets of selected XTensions™ to load when you launch QuarkXPress™.

XPert Scale™

XPert Scale lets you quickly scale Quark XPress groups, lines, text and picture boxes, and their contents, similar to the way drawing programs scale objects.

XPert Layers™

XPert Layers provides an easy way to work with QuarkXPress items by letting you locate, select, show, hide and work with items by layer.

XPert Color™

XPert Color lets you find and change colors that have been applied to Quark XPress items and contents as well as convert spot colors to process colors.

XPert ImageInfo™

XPert ImageInfo gives you quick access to information about any placed image in a QuarkXPress layout.

XPert Print™

XPert Print lets you marquee a portion of a QuarkXPress page, and either print it or save it as an EPS file.

XPert Paste™

XPert Paste lets you paste an item onto a new page or spread in the same location from which it was originally copied or cut.

XPert Menus™

XPert Menus adds four pop icons at the bottom of every QuarkXPress document window, allowing you to control the page view, current page, the current tool and the active document.

XPert Launch™

XPert Launch allows you to customize a menu to open documents and launch other XTensions.

XPert Open™

XPert Open lets you open QuarkXPress documents faster by giving you the option to preset your selection for non-matching preferences.

XPert Ungroup™

XPert Ungroup lets you ungroup all items contained in a QuarkXPress group.

XPert View™

XPert View lets you display and retain, QuarkXPress documents in custom sizes and positions.

XPert Nudge™

XPert Nudge provides a palette that lets you quickly and accurately move items.

XPert TextLock™

XPert TextLock lets you lock the contents of a text box or a chain of linked text boxes.

XPert Quit™

The XPert Quit XTension lets you control when QuarkXPress automatically quits.

COMPLETE YOUR COLLECTION WITH
XPert TOOLS VOLUME 2

A Powerful Collection of XTensions
that Makes Using QuarkXPress.
more exciting than Ever!

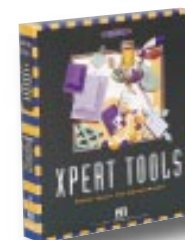
FOR QuarkXPress™

VOLUME



"ALAP'S XPert TOOLS SERIES
OFFERS LOTS OF HIGH-POWERED
NEW FEATURES FOR QUARKXPRESS
THAT MAINTAIN THE LOOK AND FEEL
OF OUR PROGRAM ..."

Tim Gill, Founder and Chairman, Quark, Inc.



THE QUARKXPRESS FEATURE REVOLUTION CONTINUES...

XPert TOOLS

VOLUME 2

XPert CharacterStyles™

Create character-based style sheets for your QuarkXPress documents and speed through tedious formatting.

XPert TextLink™

This tool allows you to link and unlink text boxes in ways you never dreamed possible.

XPert TextStyler™

Marquee text anywhere in your layouts, even in separate text boxes, and apply paragraph or character level styles quickly and easily.

XPert Pilot™

Use this resizable floating palette to navigate around your document. XPert Pilot creates a proxy of your pages or spreads so that clicking on any part of the XPert Pilot preview takes you there instantly.

XPert CommandPad™

Turn QuarkXPress into an icon-driven application with XPert CommandPad. Use color buttons on a configurable palette to activate XPress' menu items and dialogs.

XPert Scripiter™

Run any OSA compliant scripts individually or as a command sequence within Quark XPress from XPert Scripiter's floating palette. XPert Scripiter also allows you to easily name items for reference by your scripts.

XPert Rulers™

Use these free floating rulers to position your page elements more accurately.

XPert PageSets™

Create custom page configurations that retain margin, column, document setup information and more.

XPert ItemMarks™

This high-powered tool allows you to place unlimited crop and registration marks, on any page element or group.

XPert BoxTools™

Turn a text box into a picture box and vice versa with XPert BoxTools. You can also size a box to a picture and create different text indents on all four sides of a text box.

XPert JobLog™

This feature will keep a mini document history including the date and computer a document was opened on, saved on, printed on, reverted on and closed on.

XPert TextScale/Shift™

This tool adds a small floating palette that tracks the horizontal/vertical scale and baseline shift of the cursor position or selected text and allows you to dynamically change these attributes from the palette.

XPert Preferences™

Make QuarkXPress look and work the way you want with XPert Preferences.

XPert Greeking™

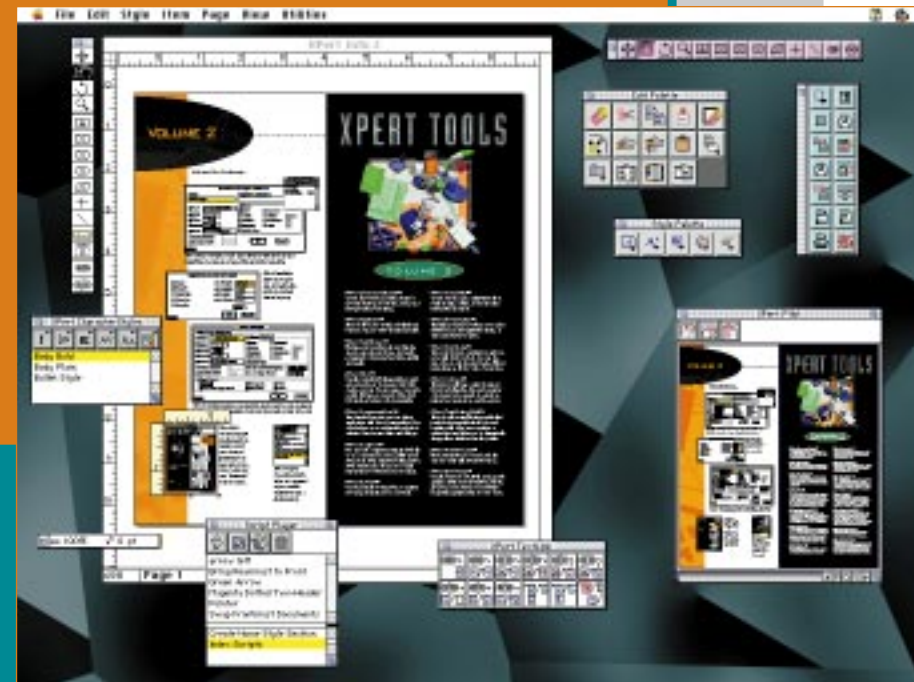
Use this feature to selectively greek specific graphics within your QuarkXPress layouts. Speed up screen redraw and wait times by greeking graphics that slow you down.

COMPLETE YOUR COLLECTION WITH
XPert TOOLS VOLUME 1

A Powerful Collection of XTensions
that Makes Using QuarkXPress...
more exciting than Ever!

FOR QuarkXPress™

VOLUME



"...AT A FANTASTIC VALUE."

Tim Gill, Founder and Chairman, Quark, Inc.



SHADOWCASTER



THE EXAMPLE ABOVE WAS CREATED USING THE STEPS DESCRIBED ON THE OPPOSITE PAGE

If You Can See It in XPress, you can create a shadow for it with ShadowCaster!

"...IF YOU NEED TO MAKE HIGH-QUALITY SOFT DROP SHADOWS, THIS ...XTENSION IS EASY ENOUGH TO MAKE YOU FEEL GUILTY."

Publish Magazine

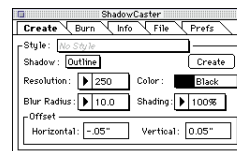
★★★★
Publish 1995

Finally, an easy, one-step way to create real soft-shadows on text and graphics while in Quark XPress! You no longer need to switch between your image editing program and QuarkXPress, no more complex multi-step procedures just to create a shadow.

ShadowCaster™ will solve all your soft shadow needs. Shadows are high resolution TIFFs which are created from selected text and/or picture boxes in your QuarkXPress layout. Shadows can be silhouetted, outlined, or ghosted. Shadows may even be combined into the underlying CMYK or RGB images, without ever leaving QuarkXPress!

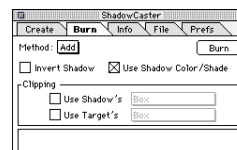
ShadowCaster 2.0 offers an intuitive, redesigned, sleeker interface; improved speed; expanded burn options.

1



Our example layout (left) contains four items in QuarkXPress: a clipped EPS file, two text boxes and a background TIFF file. In this case, the designer has decided to make a soft drop shadow of the three selected items shown using ShadowCaster. The ShadowCaster palette (far left) indicates the values entered.

2



The Shadow file has been created. Now this shadow can be "burned" into the background by selecting both the Shadow file and the Target file.

Only TIFF files can be used as Target files when using ShadowCaster. When necessary, files can be easily changed to TIFFs using ShadowCaster.

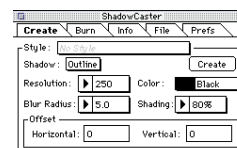
3

Original Shadow file and its picture box are deleted revealing the new background with soft drop shadow.



Once the burn is complete, the original Shadow file and its picture box are deleted revealing the new background complete with drop shadow. The new background has been automatically added to the layout during the Burn process. The original background TIFF file (no shadow) remains unchanged and can be retrieved if needed.

4



In addition to changing the type color of the word "RADIO'S," the designer has decided to create another interesting effect with the background. Four 100% Black circle picture boxes have been created in XPress. Again using ShadowCaster, another soft drop shadow will be made from these items using the values shown in the palette.

5

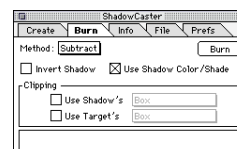
The four circle picture boxes are deleted once the shadow has been created.



Since no Offset values were entered, the soft shadow is somewhat hidden behind the four circle picture boxes.

For this effect, these four circles can be deleted once the desired shadow has been obtained.

6



The new Shadow and Target files have been selected in preparation for Burning. The Subtract Method will be used to remove color from the background as indicated by the palette. By setting the Shadow file's box background to None, one can get an idea of what areas on the Target file will be affected by the burn.

7

Using a QuarkXPress text box, the word "EXPO" is added and the layout is finished.



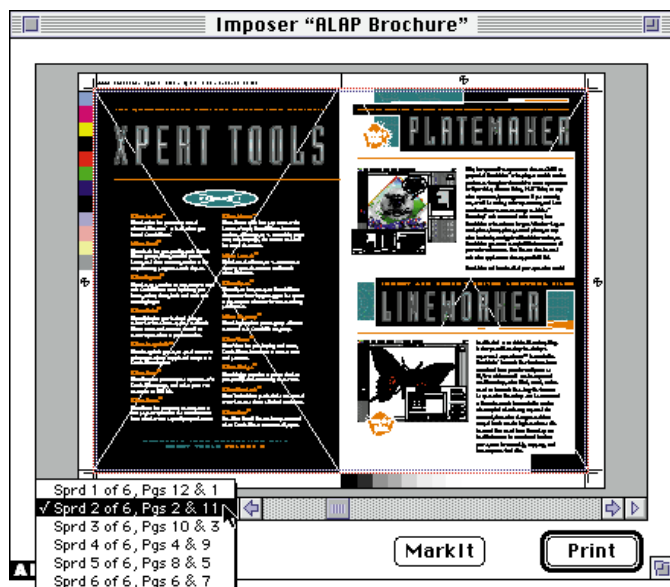
The circle shadows have now subtracted color from the background. As a final touch, the designer has added the word "EXPO" over the subtracted burn areas and the layout is finished.

All of the steps above were performed entirely while working in QuarkXPress.

CREATE PRINTER SPREADS DURING THE PRINT STREAM

IMPOSER

This is one cool, real neat, super swell, groovy, absolutely fabulous, heavy duty, extra-strength, acid free, ph-balanced, non-threatening, political ly correct Imposition software.



The new Imposer XTension will impose pages from a single XPress document into printer spreads. Unlike other XTensions, Imposer does not rearrange or shuffle pages in a document. Page reordering is handled in the print stream—yielding not only quicker but more reliable results. Imposer gives you full control over margins, gaps, creep, bleed and crossover traps. Whether your production piece is a brochure or a book, Imposer offers a seamless, easy-to-use solution for QuarkXPress.

The Imposer palette shows you a preview of any or all document spreads in printer spread orientation, with or without viewing the pressmarks. The Page Setup... and Print... dialogs are both accessible from the Imposer palette. And when used in conjunction with the MarkIt XTension, also from A Lowly Apprentice Production, you can apply custom pressmarks to your imposed output.

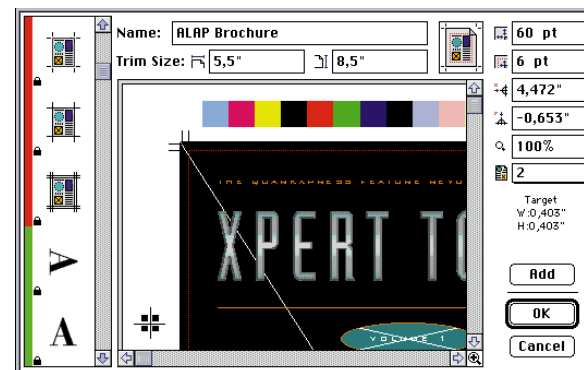
CREATE CUSTOM REGISTRATION MARKS AND CROP MARKS

MARKIT

Buy with
Imposer!



Control and customize
your output with
BOTH of these
powerful ALAP products!



MarkIt is a high-powered output alternative to QuarkXPress' standard registration and crop marks. Using MarkIt is similar to setting up an XPress style sheet, but rather than assigning text attributes, you create an output "style."

MarkIt also supports an unlimited number of custom EPS graphics as pressmarks. The XTension ships with a variety of crop and bleed marks to choose from and allows for weight control of trim lines and crop marks. There are also controls for printing marks on spot color plates.

When printing spreads, MarkIt automatically adjusts the marks to fit the spread page size and place fold marks where the inner spread pages meet. When used in conjunction with the Imposer XTension, also by A Lowly Apprentice Production, you can apply your custom pressmarks to your XPress documents as printer spreads during output. MarkIt lets you make your mark with style.

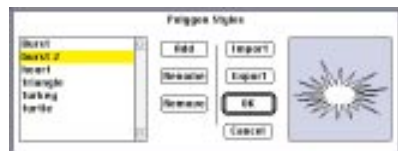
MASTER YOUR QUARKXPRESS ITEMS WITH STYLE SHEET CONTROL

ITEMMASTER

★★★★½
Publish 1995



ItemMaster™ extends the style sheet metaphor across all items in QuarkXPress! ItemMaster allows you to setup item attributes in the same manner you setup text attributes. Once these attributes are built, you can use ItemMaster to apply the style or create the element. Edit the ItemMaster Style and, just as with style sheets, all stylized elements in your document will reflect the change.



ItemMaster also includes a powerful polygon style feature which will memorize your polygonal shapes and apply them to any box. Master your work with ItemMaster!

MANIPULATE YOUR TEXT WITH "FLUID-LIKE" CONTROL

FINGERTYPE

FingerType™ provides incredible ease and fluid control of text. Using a new approach FingerType allows you to click-hold-and-drag on text or text ranges to achieve most of the character and paragraph attributes available in Quark XPress. For example, kerning a letter with FingerType is merely a matter of clicking on the letter and sliding it into the desired position. The same holds true for drop caps, click on the letter you want and simply pull it into position. Any changes made with FingerType can be undone by a click on the eraser tool!

FingerType is the interactive text tool you have always wished for!



FingerType gives you total control over: Tracking and Kerning, Sizing and Scaling, Leading, Paragraph Indents, Paragraph Spacing, Dropcaps, Paragraph Rules, Text Inset, Paragraph Formats, and Undo, with a click of the mouse.

CREATE CUSTOM COLOR SEPARATIONS IN YOUR GRAPHIC IMAGES

PLATEMAKER

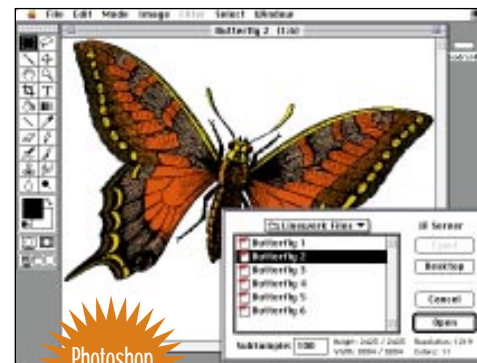


Why limit yourself to separations that are CMYK or grayscale? PlateMaker™ is the plug-in module used in production throughout the world to create separations for Spot Color, Custom Color, Hi-Fi™ Color, or any other separation/printing process. If you currently are, or will be making color separations, and have wondered how to save an image in Adobe™ Photoshop™ with custom ink color names, then PlateMaker is the solution for you. Whether they are touch plates, bump plates, varnish plates, or any other kind of specialty plate PlateMaker is for you. PlateMaker generates a single EPS that contains all your color information. This file can then be used with other applications that support DCS 2.0.

PlateMaker will handle all of your spot color needs!

IMPORT AND EXPORT SCITEX™ LINEWORK FILES

LINEWORKER



LineWorker™ is an Adobe Photoshop Plug-In that gives Photoshop the ability to import and export Scitex™ linework files. Handshake™ linework files that have been transferred from your Scitex System or PS/2 to a Macintosh® can be imported into Photoshop, color filled, tinted, and re-saved as linework files. Any file that can be opened in Photoshop can be converted to Scitex linework. Linework files can be sub-sampled when being imported for extremely fast color changes and then merged back into the high-resolution file. Linework files saved from Photoshop via LineWorker can be transferred back to your system for assembly, trapping, and then output to final film.



U.S.A. 2700 19th Street • San Francisco, California 94110

TEL : (+1) 800.788.7557/415.642.3733

FAX : (+1) 415.642.3816

Internet : Sales@xchangeus.com



United Kingdom 1-2 Bromley Place • London W1P 5HB

TEL : (+44) 171.637.2966

FAX : (+44) 171.637.2842

Internet : XChangeUK@aol.com



France 49 Boulevard Péreire • 75017 Paris

TEL : (+33) 1.46.22.79.00

FAX : (+33) 1.46.22.79.80

Internet : XChangeFR@aol.com



Deutschland Eglosheimerstrasse 41

D-71636 Ludwigsburg (Nr. Stuttgart)

TEL : (+49) 7141.45.12.40

Internet : XChangeDE@aol.com



Scandinavia GL. Havnevej 2 • DK2670 Greve Denmark

TEL : (+45) 4369.2770

FAX : (+45) 4369.2778

Internet : XChangeSCN@aol.com